

SUPERIOR **BOILER WORKS, INC.**



PACKAGED BOILERS

STEAM AND HOT WATER

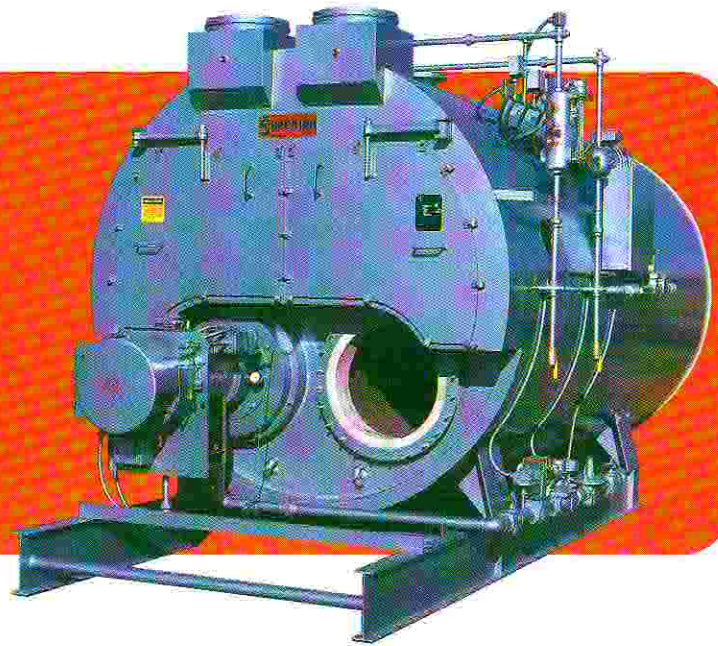


AZTEC

2-Pass Dry Back High & Low Pressure Steam or Hot Water Scotch Marine Boilers. Capabilities from 30 through 1000 HP Fuels: Gas, Oil or combination. For details, request Aztec brochure.

WASTE HEAT RECOVERY

Custom Designed Available in Dual-Chamber, Single Pass, Two Pass or Three Pass units. High or Low Pressure Steam or Hot Water. Available with or without supplemental firing. For details request Waste Heat Recovery Boilers brochure.



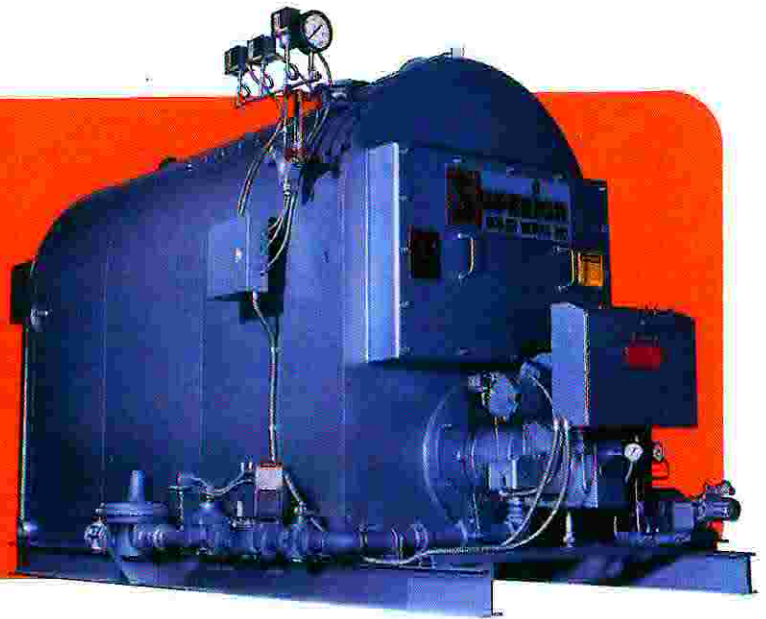
SEMINOLE

3-Pass Wetback Scotch Marine Packaged Boilers. High or Low Pressure Steam or Hot Water, 70-800 HP Capacity. Fuels: Gas, Oil or combination. For details, request Seminole brochure.



OSAGE

3-Pass Firebox Packaged Boiler. Low Pressure Steam or Hot Water. 15 HP thru 447 HP Capacity. Fuels: Gas, Oil or combination. For details, request Osage brochure.



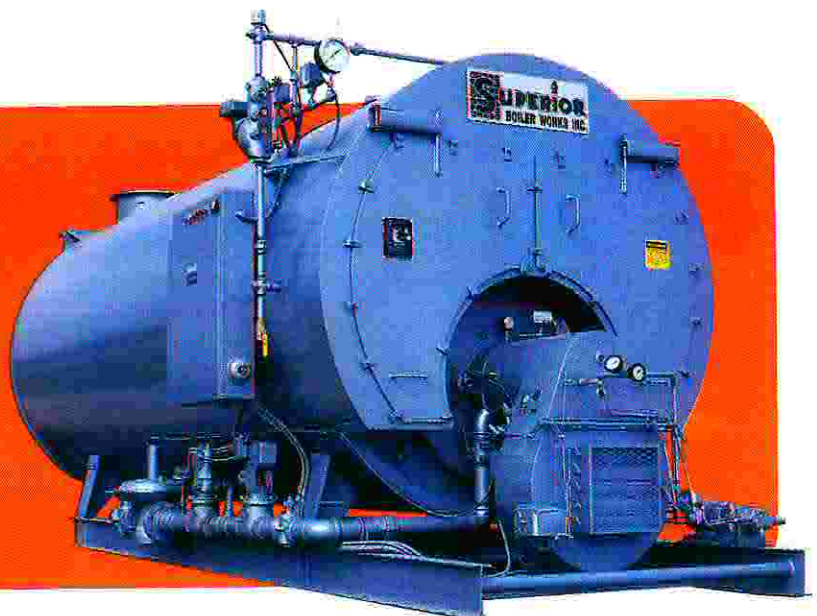
HORIZONTAL RETURN TUBULAR

Custom Designed H.R.T. Built to specific job requirements. Heating surface, 500 sq. ft. to 7000 sq. ft., design pressures up to 300 psig. For details, request H.R.T. brochure.



MOHAWK

3-Pass Dry Back High & Low Pressure Steam or Hot Water, Scotch Marine Packaged Boilers. Sizes 30 to 1000 HP Fuels: Gas, Oil or combination. For details, request Mohawk brochure.



PENTAD ASSOCIATES, INC.
17148 WATERHOUSE CIRCLE, UNIT C
PARKER, CO 80134
PH: (303) 688-4070 FAX: (303) 688-4204
EMAIL: INFO@PENTADASSOC.COM
WEBSITE: WWW.PENTADASSOC.COM

FEEDWATER SYSTEMS

Condensate Return-Feedwater Systems

For boilers 10 thru 1000 HP Completely automatic systems for the recovery of condensate and the feeding of water to boilers. 15 psig - 300 psig. For details, request Condensate Return Feedwater Systems brochure.



Superior Boiler Works, Inc., has been manufacturing Firetube Boilers in Hutchinson, Kansas for over 50 years. From this central location, over 10,000 boilers have been shipped to installations throughout the United States and all over the world. Superior quality, dependability and performance are exemplified by the many repeat orders from

satisfied customers. With over 87,000 sq. ft. of manufacturing space, Superior Boiler Works offers quick delivery of in-stock standard units, plus custom-design engineering to customer specifications. All this, backed by a network of sales and service organizations, provides maximum support to our customers.



CORPORATE OFFICES: 3524 E. FOURTH STREET, HUTCHINSON, KANSAS 67501
MAILING ADDRESS: P.O. BOX 1527, HUTCHINSON, KANSAS 67504-1527
TELEPHONE: 316 662-6693 FAX 316 662-7586 TELEX 910-740-1633